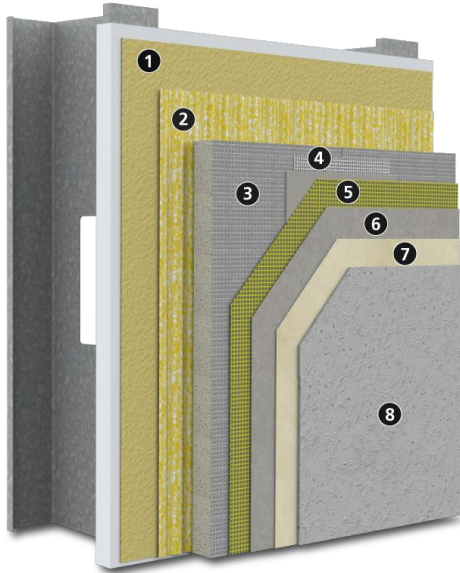


# StoQuik® Silver DrainScreen®

Impact resistant decorative and protective cladding with advanced cavity wall design, and fluid applied air and water-resistive barrier



Substrate: Glass mat gypsum sheathing in compliance with ASTM C 1177, Exterior or Exposure 1 wood-based sheathing (plywood or OSB).

1)	StoGuard® Air & Water-Resistive Barrier
2)	Sto DrainScreen Drainage Mat
3)	PermaBase® Brand Cement Board
4)	StoGuard Mesh Joint Reinforcement (skim coated with Sto base coat)
5)	Sto Mesh (embedded in Sto Base Coat)
6)	Base coat: Sto Primer/Adhesive-B or Sto BTS® Xtra
7)	StoPrime® Sand (optional)
8)	Choose among: <ul style="list-style-type: none"> <li>• Sto Standard Textured Finishes</li> <li>• Sto Specialty Finishes</li> <li>• StoCast Finishes: Wood or Brick</li> </ul>

System Accessory: StoSeal STPE Sealant for use as an exterior weather seal around wall penetrations, at dynamic joints in wall construction, and as an interior air seal for air barrier continuity

## System Description

StoQuik Silver DrainScreen is a decorative and protective wall cladding assembly with advanced cavity wall design and fluid applied air and water-resistive barrier for superior moisture protection. Sto's high performance finishes applied over cement board provide handsome aesthetics and a durable exterior skin.

## Uses

StoQuik Silver DrainScreen can be used in residential or commercial wall construction where energy efficiency, superior aesthetics, and air and moisture control are essential in the climatic extremes of North America.

## Features

## Benefits

Hard surfaced exterior skin	Resists damage from impact and abuse
Installs quickly	Reduced down time, early occupancy
Advanced cavity wall design with air and water-resistive barrier	Protects against mold and moisture problems
Wide range of finish colors and textures	Aesthetic and curb appeal easy to achieve
Fully tested, building code compliant	Peace of mind

## Properties

Cladding Weight	< 4 psf (20 kg/m <sup>2</sup> )
Assembly Thickness (from exterior sheathing face)	Nominal 7/8 inches (22 mm)
R-value	Based on stud cavity insulation
Cladding Wind Load Resistance (apply appropriate safety factor)	Tested to: + 166, -94 psf (+7.94, - 4.50 kPa)
Air Leakage (air barrier component)	< 0.004 cfm/ft <sup>2</sup> at 1.57 psf (0.02 L/s•m <sup>2</sup> at 75 Pa)
Construction Types, Fire-Resistance	<ul style="list-style-type: none"> <li>• NFPA 285 for noncombustible construction</li> <li>• ASTM E119 for hourly ratings</li> </ul>

## Warranty

10 year Limited Warranty with Sto Standard Textured Finishes  
 12 year Limited Warranty with Sto Specialty Finishes  
 15 year Limited Warranty with StoCast Finishes

## Maintenance

Requires periodic cleaning to maintain appearance, repair to cracks and impact damage if they occur, recoating to enhance appearance of weathered finish. Sealants and other façade components must be maintained to prevent water infiltration.

System Bulletin

# StoQuik<sup>®</sup> Silver DrainScreen<sup>®</sup>

Impact resistant decorative and protective cladding with advanced cavity wall design, and fluid applied air and water-resistive barrier

Limitations	
Minor surface cracking at joints can become visible in the finished exterior surface.	
Wind load resistance: +7.94, - 4.5 kPa (+ 166, -94 psf) ultimate loads achieved. Ultimate wind load resistance also depends on sheathing, sheathing attachment, and stiffness of supporting construction. Design for maximum allowable deflection of L/360.	
The system is generally recommended for low-rise residential and commercial wall construction (4 stories or less). In some cases, such as balcony infill walls the system may be used on taller buildings. See wind load data and verify conformance with project design wind pressure requirements. Always construct a mock-up to verify design details, aesthetics, and test to verify performance as directed by design professional.	
Fire-Resistance-Rated Construction: where an hourly fire-resistance rating is required consult ICC ESR 1510 and provide analysis of the final proposed wall assembly to verify rating is met.	
Planar irregularities/waviness may be visible in finished wall surface if supporting frame work is out of plane. Heavy texture finishes ( $\geq 1.5$ mm) and/or two coats of base coat will minimize these effects.	
For use on vertical above grade walls only. Do not use below grade or on roofs or roof-like surfaces.	
Joints are required, including at intervals in the field of the wall to accommodate thermal movement. Refer to Sto Specifications	
Light finish colors (LRV $\geq 30$ ) are recommended to minimize thermal stress. Dark or highly saturated colors may require added maintenance compared to light or pastel colors	
Air and Water-Resistive Barrier, insulation board, and drainage mat are not intended for prolonged weather exposure. Refer to Product Bulletins.	
Refer to specific component product bulletins and packaging for other limitations that may apply involving use, handling and storage of component materials.	
Sustainable Design	
Air Quality and VOC Compliance	
All finish coatings, air and water-resistive barrier joint treatments and coatings meet US EPA (40 CFR 59) and SCAQMD (Rule 1113) emission standards	
LEED Credit Eligibility	
System has high potential for LEED and other sustainability program credits based on use of continuous air and water-resistive barrier and VOC compliance	
Regulatory Compliance and Standards Testing	
ICC ESR No. 2536 covering StoQuik Silver Systems	Complies with 2015 and 2018 IBC and IRC
ICC ESR No. 1233 covering StoGuard Air & Moisture Barrier	Complies with 2015 and 2018 IBC, IRC and IECC
ASHRAE 90.1-2019 <sup>1</sup>	Complies with Section 5, Building Envelope, air barrier requirements
ASTM E 2357 <sup>2</sup>	Air and water-resistive barrier meets air leakage resistance criteria of $\leq 0.04$ cfm/ft <sup>2</sup> at 1.57 psf (0.2 L/s•m <sup>2</sup> at 75 Pa)
NFPA 285 <sup>3</sup>	Meets flame propagation criteria for use on Types I, II, III, IV construction
ASTM E 119 <sup>4</sup>	Capable of meeting requirements for 1 or 2-hour rating over non load-bearing steel frame construction

1. Energy Standard for Buildings Except Low-Rise Residential Buildings
2. Standard Test Method for Determining Air Leakage of Air Barrier Assemblies
3. Standard Fire Test Method for Evaluation of Fire Propagation Characteristics of Exterior Non-Load-Bearing Wall Assemblies Containing Combustible Components
4. Standard Test Methods for Fire Test of Building Construction and Materials

For most complete information refer to [www.stocorp.com](http://www.stocorp.com)

<p><b>Sto Corp.</b> 3800 Camp Creek Parkway Building 1400, Suite 120 Atlanta, GA 30331</p> <p>Tel: 404-346-3666 Toll Free: 1-800-221-2397 Fax: 404 346-3119</p> <p><a href="http://www.stocorp.com">www.stocorp.com</a></p>	<p><b>SB-1100</b> Revision: 008 Date: 5/2023</p>	<p style="text-align: center;"><b>Attention</b></p> <p>Sto products are intended for use by qualified professional contractors, not consumers, as a component of a larger construction assembly as specified by a qualified design professional, general contractor or builder. They should be installed in accordance with those specifications and Sto's instructions. Sto Corp. disclaims all, and assumes no, liability for on-site inspections, for its products applied improperly, or by unqualified persons or entities, or as part of an improperly designed or constructed building, for the nonperformance of adjacent building components or assemblies, or for other construction activities beyond Sto's control. Improper use of Sto products or use as part of an improperly designed or constructed larger assembly or building may result in serious damage to this product, and to the structure of the building or its components. <b>STO CORP. DISCLAIMS ALL WARRANTIES EXPRESS OR IMPLIED EXCEPT FOR EXPLICIT LIMITED WRITTEN WARRANTIES ISSUED TO AND ACCEPTED BY BUILDING OWNERS IN ACCORDANCE WITH STO'S WARRANTY PROGRAMS WHICH ARE SUBJECT TO CHANGE FROM TIME TO TIME.</b> For the fullest, most current information on proper application, clean-up, mixing and other specifications and warranties, cautions and disclaimers, please refer to the Sto Corp. website, <a href="http://www.stocorp.com">www.stocorp.com</a>.</p>
---	--	--